

# RRM eCommerce Customer Portal w/EDI

The RRM eCommerce Customer Portal Module enables your customers to view the following via the internet:

- The Status of their orders with drill down to order details.
- Currently scheduled delivery date(s).
- Availability of items/parts in inventory.

## Software Modules Included:

### ■ Customer Portal WEB Server Software

- Administration of Customer's Login ID & Password.
- Customizable scrolling messages to greet your customers.
- Extendable intranet allows you to add your own pages and functions from portal
- Customizable WEB Pages for your company and each customer.
- Separate WEB pages for each portal function.

### ■ Customer Portal Snapshot Database Server Software

- Snapshot database prevents direct internet access to your live ProfitKey database.
- Database holds a snapshot of portal information available for customer view via the Internet.
- The frequency of reloading the Snapshot Database is controlled by you, **not** by your customer.
- Tracks last date of your customer visit to your portal.

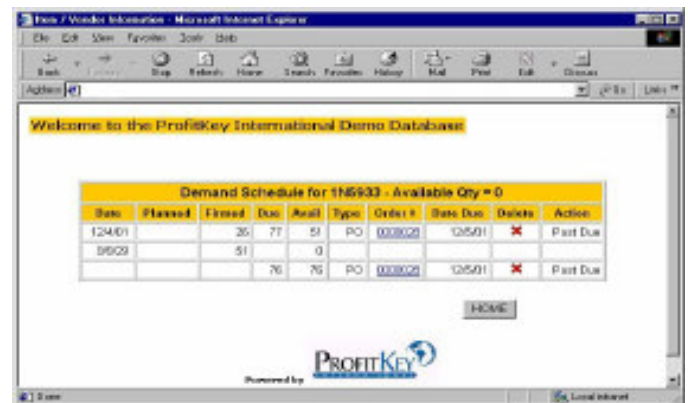
### ■ Internet Environment

- Portal WEB Server can be accessed from your Main WEB site with a hyper link (Optional).
- Firewall recommended (firmware or software).
- Domain Name or IP address required for access to Customer Portal WEB server.

## Computing Environment:

### ■ Customer Portal WEB Computer Server

- A separate in-house W/2000 or 2003 Server is required
- Latest Service Pack installed.
- Active Server Pages enabled.
- Oracle client software installed with licenses for number of users accessing the site.
- Oracle ODBC driver installed.
- Operate as a node on the same LAN as the RRM ProfitKey Live database(s).



### ■ Customer Portal Snapshot Database Server

- Snapshot Database can be installed on an AIX, W/2003 or Linux computer. It can be a separate server or reside on the Portal WEB or RRM live db servers.
- Operate as a node on the same LAN as the RRM ProfitKey live database(s).
- Oracle RDBMS Server software is required.

Available For RRM Version 7 Client/Server System.

**Note:** All three software components may reside on the same server as long as the web server is a W/ 2003 server.

## EDI Options:

### ■ EDI Transaction Interface Module

Standard EDI Interface modules include:

Outbound	810	Invoices
Inbound	830 / 862	Planning Schedule With Release
Inbound	850	Purchase Orders
Outbound	856	Ship Notice Manifest
		(provided by EDI Options using 810)

**EDI Options, Inc. Package** - Software and services provided by EDI Options, Inc., a firm specializing in EDI services. Includes the following and is licensed under an EDI Options contract. Management Software module is maintained under EDI Options warranty/maintenance.

EDI Management Software  
 Custom software engineering as needed.  
 Trading Partner Setup  
 Audit Trail & custom reporting  
 ODBC Data Mapping  
 EDI Communications  
 Bridging to ProfitKey database(s)  
 Value Added Network Services.