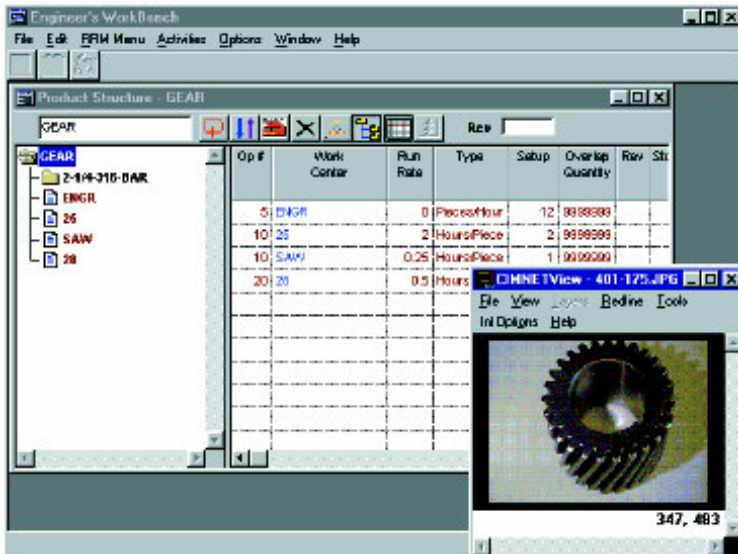


# Engineering



**Engineering provides the ability to enter all resources (capacity, materials, tooling, etc.) into a single or multi-level bill of resources.**

- Uses intuitive “Drag & Drop” technology to quickly build or copy Bill of Material and Routings.
- Organizes all material, labor, and tool costs related to the item.
- Relates materials, tools, and outside services to specific operation schedules.
- Copies single and multilevel BOM and Routing slips from other parts or work order actuals.
- Graphical display of routing, and BOM on one screen.
- Integrated Document Management allows multiple documents per inventory item and BOM.
- Provides global updates, mass changes, and delete capabilities.
- Uses optional import structure from CAD.
- Copies and costs Bills of Material.
- Unlimited notes can be applied to items
- Multiple units of measure.
- Exception message filters.
- Up to 30 user defined fields.
- Integrated Engineering Change Management System (ECM)