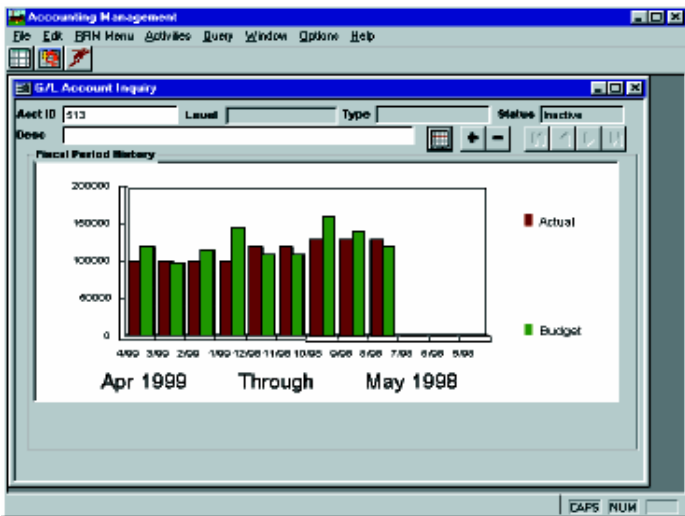


General Ledger



- Allows multiple accounting periods to be open simultaneously.
- Maintains multiple financial entities for consolidation of complex company structures.
- Integrates with RRM Accounts Payable and Accounts Receivable modules to eliminate duplicate data entry.
- Allows selection of a 12 or 13 period fiscal year.
- Allows entry of recurring and reversing batches.
- Integrated report writing tool for custom financial reports. Easily generate reports using ODBC tools, such as Crystal Reports.
- Allows recurring journal entries.
- Maintains historic, past, present, and future budgets.
- Provides full financial reporting.
- Supports foreign currency conversions and processing.
- Allows accounting periods to be closed and locked.
- Allows user defined Chart of Accounts.
- Supports Drill Down General Ledger Activity from Financial Reports and Account Balance Inquiry.

The General Ledger module organizes a company's financial data into an automated General Ledger. It provides the tools to create and maintain a multi-level Chart of Accounts, control transaction posting, and generate financial statements.