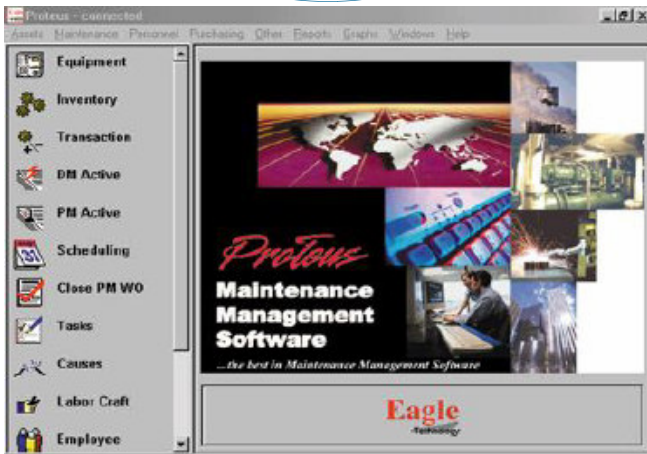


Maintenance Management



ProTeus IV CMMS is a multi-site asset management and maintenance software solution for any size plant or facility.

Maintenance management is the effective planning and execution of tasks performed to maintain the operation of equipment, assets and facilities. A CMMS is a computerized solution to managing the Maintenance Management needs of your facility. It gives a company an accurate picture of where time and money is being lost or saved in its maintenance department, and helps target areas where efforts should be focused. When used to its potential, a CMMS can help a company achieve maximum operations efficiency and minimize maintenance costs to stay competitive in today's marketplace.

ProTeus CMMS is a multi-site asset management and maintenance software solution for any size plant or facility. ProTeus helps schedule preventive maintenance; issue work orders; track equipment, inventory, purchasing information, employee records, vendors and contacts; and includes detailed reporting. It can easily be extended to people outside the organization to create a true enterprise-wide system. Global operations are supported by ProTeus' multilingual, multi-currency capabilities. ProTeus can also be taken "mobile" on handheld PDA's. ProTeus provides comprehensive functionality for organizations whose goal is to:

- optimize capital assets and resources
- increase equipment uptime
- extend equipment life
- improve the efficiency of materials management