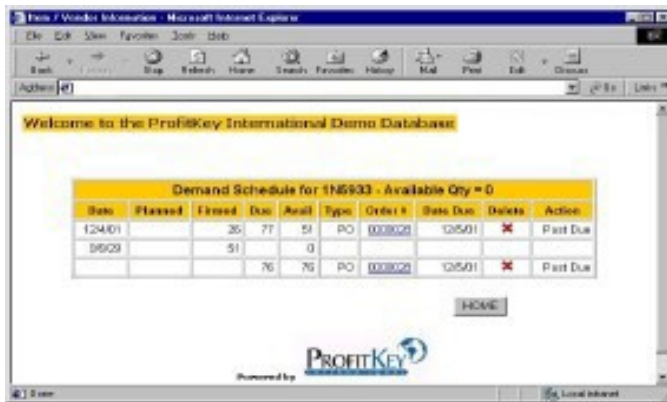


## eCommerce Customer Portal w/EDI

The eCommerce Portal Module enables your customers to view the following via the internet:

- The status of their orders with drill down to order details.
- Currently scheduled delivery dates.
- Availability of products in inventory.
- Online tracking with user definable carrier tracking URLs



### SOFTWARE MODULES INCLUDED:

#### Customer Portal WEB Server Software

- Administration of Customer's Login ID & Password.
- Customizable scrolling messages to greet your customers.
- Extendable intranet allows adding your own pages and functions from portal
- Customizable WEB Pages for your company and each customer.
- Separate WEB pages for each portal function.

#### Customer portal snapshot database server

- Snapshot Database can be installed on an AIX, W/2003 or Linux computer. It can be a separate server or reside on the Portal WEB or RRM live DB servers.

- Operate as a node on the same LAN as the RRM ProfitKey live database(s).
- Oracle RDBMS Server software is required

#### EDI Transaction Interface Module

- Standard EDI Interface modules include:
 

Outbound	810 Invoices
Inbound	830/862 Planning Schedule with Release
Inbound	850 Purchase Orders
Outbound	856 Ship Notice Manifest (provided by EDI Options using 810)

**Note:** All three software components may reside on the same server as long as the web server is a Windows 2003 server.